

Customer: **Parks Canada**

Project: **Digital elevation models (DEM) of Rocky Mountains**

Duration: May - September 2003

Scope: DEM production for the four parks in the Rocky Mountains using Radarsat-1 stereoscopic images.

Value: \$25,000

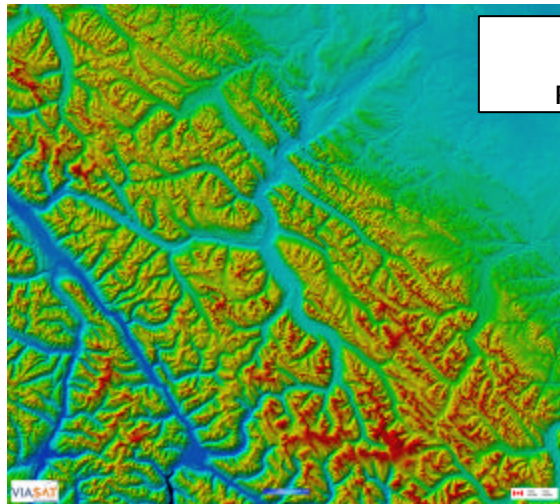
Highlights:

- Many inputs used in production including a DEM from NASA produced in the Space Shuttle program.
- Layover phenomenon very present in Radarsat-1 stereoscopic images.

Description:

- Area covered: 80,000 km²
- DEM resolution: 50 meters
- Altimetric accuracy of models: 50 meters

In images...



DEM of
Jasper region in
Rocky Mountains